





02



03



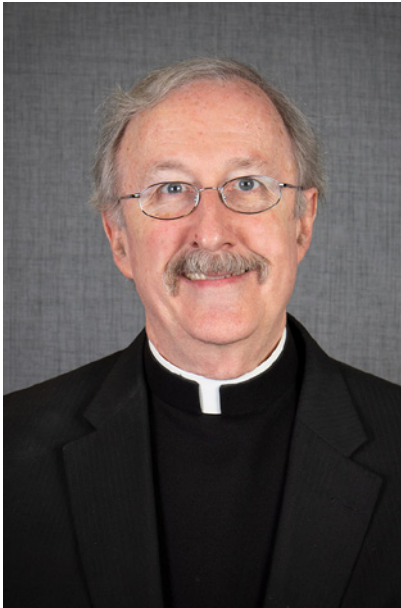
04



05

- 01. St. Margaret Mary Church Altar
- 02. Grad Ceremony
- 03. Mass at St. Margaret Mary
- 04. School Pep Rally
- 05. Youth Ministry Event

Letter from Father Hammer



One of the aspects I cherish most about our parish family is our deep-rooted sense of shared history and commitment to building on our tradition. Reflecting on past campaigns such as “Planted in Faith,” “Growing with the Spirit,” and “Alive with the Spirit,” I’m reminded of how these initiatives have helped shape the vibrant and supportive parish community we hold dear today. Many of you played pivotal roles in these past efforts, and now it’s our opportunity to make a lasting impact with our new endeavor—our Defining Moment. By building upon the vision of those who came before us, we can ensure that St. Margaret Mary continues to shine brightly due to our “Strength with Spirit.” Your contributions—whether through your time, talents, or financial support—are vital to our mission and will make a meaningful difference in our future parish life.

I deeply value your coming commitment to our Capital Campaign and our shared vision for our parish’s future. Your support is crucial as we look to expand and enhance our community. This campaign focuses on two major areas of growth: the construction of a new parish center for use year-round and the establishment of a preschool.

Currently, our Hospitality and Conference rooms are limited by school safety protocols, restricting their use during school hours. A new, dedicated building will allow us to host senior lunches, presentations, bereavement meals, meetings, and other gatherings, as well as dedicated space addressing needs identified in our recent survey, while further strengthening our community. Additionally, this new Parish Ministry Building will also support the growth of our school.

The addition of a preschool will provide parish families with convenient, comprehensive education at one location, ensuring a seamless experience for their children from early childhood through eighth grade. There is a strong demand for early childhood development, and this aligns us with other Catholic schools in the Greater Louisville area, helping us retain families who might otherwise look elsewhere. Moreover, with a new sports complex being added to our campus, we will create a vibrant hub for worship, service, pastoral care, and lifelong education, becoming a brighter beacon of light for the foundation as originally done by those before us.

Your contributions—of time, talent, and treasure—are essential for our future growth and sustainability, establishing a solid foundation for our parish community for generations to come. As you consider your support, there are various naming opportunities for parts of our new building, including the Early Childhood Development Center, Hospitality Room, and specific classrooms and conference areas.

As we near our parish’s 75th anniversary, we stand at a pivotal moment. This milestone encourages us to honor our history while looking ahead to the future, creating new spaces that will benefit our community for the next 75 years. With deep gratitude for those who came before us, it’s now our time to embrace this “Defining Moment.”

St. Margaret Mary Pray For Us

Your Servant In Christ,

Fr. Bill Hammer

“*I believe God is beginning to prepare us for our next “defining moment”.*”



01

Vision & Mission of St. Margaret Mary

Mission Statement

To be disciples who know, love, and serve God.



02

Vision Statement

As Disciples of Christ in the Roman Catholic Tradition, St. Margaret Mary Catholic Community inspires deeper relationships with Jesus Christ through prayer, formation, education, and service.



03



04

Goal Statement

- As disciples, we commit.....
- To ignite an evangelical spirit that awakens our faith.
- To passionately empower relationships with Christ and each other.
- To compel the discovery of Christ's gifts.
- To enthusiastically be a witness to our Catholic faith and traditions.

- 01. Recent Mass
- 02. Parish Picnic
- 03. Recent Youth event
- 04. Current students



01

What are we doing?

To address the evolving needs of our entire parish and ensure the safety of our children in the St. Margaret Mary classrooms, we are launching a BOLD CAMPAIGN with a \$11 million fundraising goal. This campaign aims to:

School Needs:

- **Expansion plans for the school:** Transform the current Parish Center space by converting it into five new Pre-K classrooms, a dedicated reading lab, and private instructional spaces all within the existing school/parish building.
- **Enhancing School Security:** By utilizing a separate parish building for events, we can ensure our school remains completely secure, further reinforcing our already high safety standards.
- **New Practice and Athletic Field Facility:** Develop a new athletic complex, including restrooms, concessions, and storage, which is currently funded and under construction.

Parish Needs:

- **Construct a New Building:** Create a larger gathering space for the church community to host post-Mass events, wedding receptions, bereavements, and large parish meetings.
- **Additional Meeting Space:** Provides room outside the school for various parish groups, including Seniors, Choir, Bible Study, Sunday School, Gather the Children, and Youth Group.
- **New Parish Offices:** Build new offices to more effectively address the needs of our parish community.

Your support in this campaign will help us meet these critical needs and strengthen our parish for years to come.



02



02

01. After Mass Event in Hospitality Room
02. Live Nativity
03. Youth Ministry in Action



01



02

Why are we doing it?

To address the evolving needs of our entire parish and ensure the safety of our children in the St. Margaret Mary classrooms, we are launching a BOLD CAMPAIGN with a \$11 million fundraising goal.

- The world has significantly changed over the past 15 years, with all schools now required to comply with new state "Security Mandates." These regulations necessitate fully secured learning environments, meaning that our Parish Center and Meeting Rooms cannot be used for meetings or parish gatherings during school hours.
- Our school remains unwavering in its commitment to providing the safest environment for our children. Parents have expressed a clear need for Preschool instruction on our campus, as we are currently the only East End school not offering programs for 3- and 4-year-olds.

Our parish community has a proud history of rising to meet its needs:

- 1974-1975: New Activities Hall and Renovation of School & Church (*"Living in the Spirit"*)
- 1991-1992: New Church (*"Growing with the Spirit"*)
- 2000-2001: New Parish Center and Expanded School (*"Alive with the Spirit"*)

With this tradition in mind, we are now poised to address our current needs with the same spirit of commitment and growth.



03

A Turning Point: The Moment Is Now

Our Defining Moments Campaign is a 3-year fundraising initiative aimed at fully financing our campus expansion. The campaign seeks to raise a total of \$11 million.

Through this campaign, we come together to embody "Strength with Spirit."

We offer numerous opportunities to showcase your support, including naming rights and recognition around campus. Your commitment will help us achieve our goals and strengthen our community.



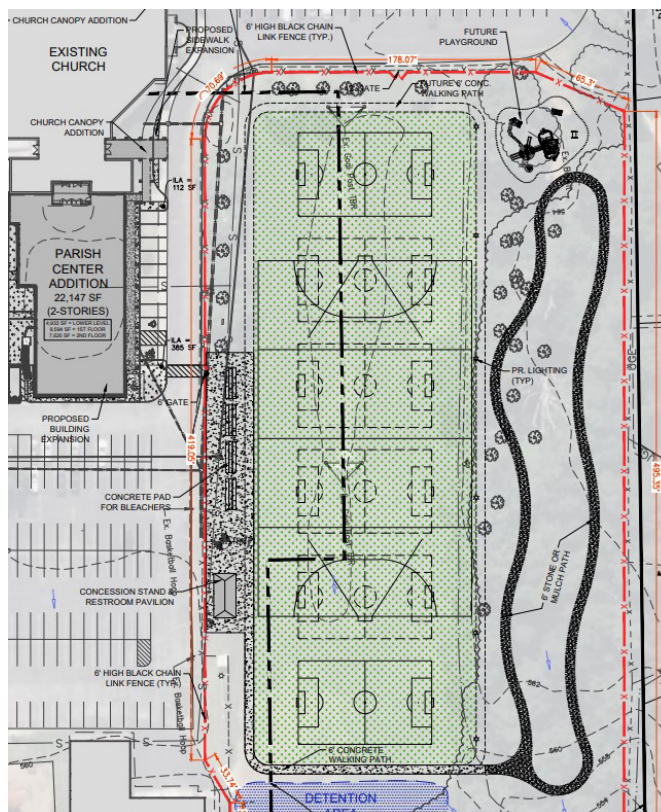
04



06



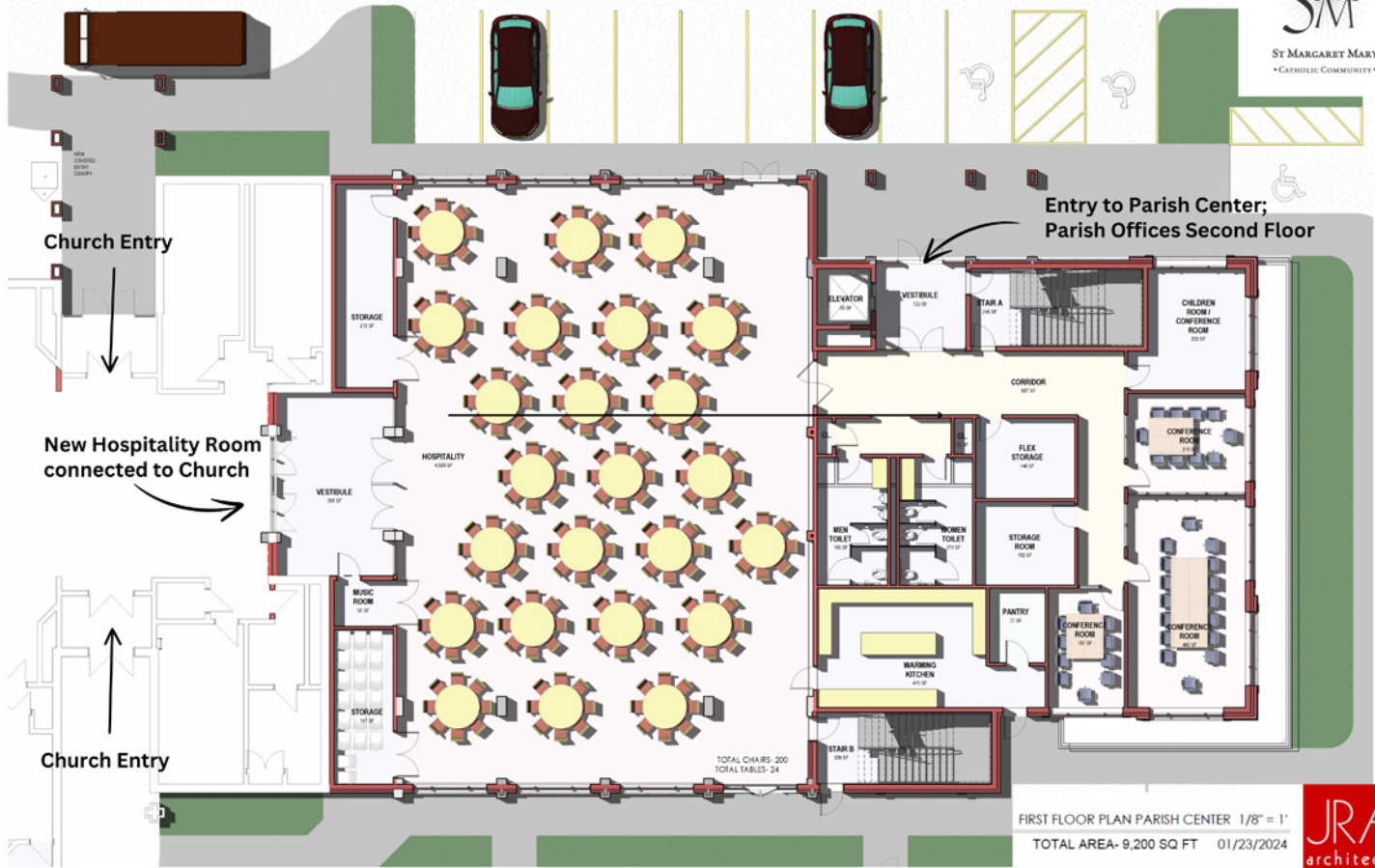
05



07

- 01. Students Arriving at School
- 02. Easter Scouts Camp Fire
- 03. Graduation Mass
- 04. Parish Center addition
- 05. Hospitality Room
- 06. New Concessions
- 07. New field space

New Parish Center First Floor



New Classrooms & School Offices

The existing Hospitality area and Meeting Rooms will be repurposed to create four new classrooms and a Reading lab.

The existing doors at the Pastoral Center will be repurposed as the new drop-off point for Pre-K students, featuring a canopy for added convenience.

School offices are to replace parish offices.



Letter from Campaign Chairs

Dear Parish Family,

As Campaign Chairs for our Defining Moments Campaign, we're excited to share our vision and goals for this initiative.

The Situation

In response to new state security mandates, our Parish Center and Meeting Rooms cannot be used during school hours to ensure a secure learning environment. Additionally, many parents have requested Pre-K instruction, which is currently unavailable at Saint Margaret Mary.

Our Mission – “Defining Moments”

To address these challenges and community needs, we are launching a campaign with an \$11 million goal. This will fund:

School Needs:

- Remodeling the Parish Center to add 5 Pre-K classrooms.
- Expanding school offices in the current Parish Office space.
- Building a new practice and athletic field facility (currently under construction).

Parish Needs:

- Constructing a new building for larger gatherings and events.
- Creating meeting rooms for various parish groups.
- Establishing new Parish offices.

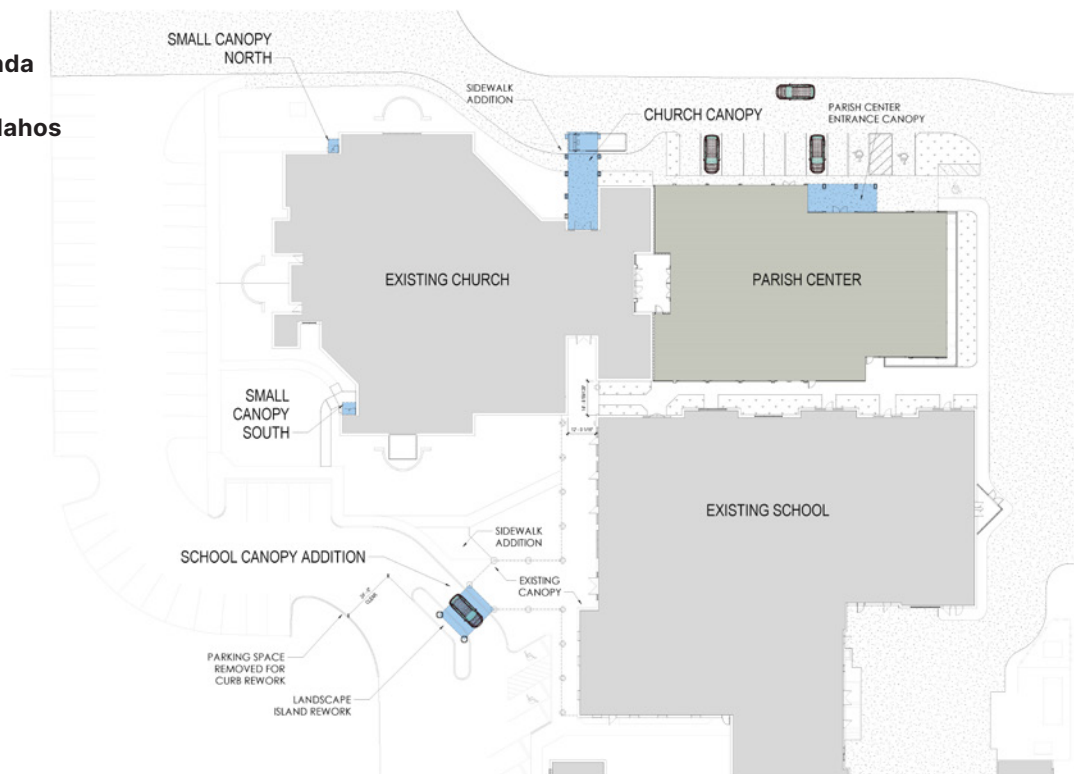
Benefits to Our Parish:

- Enhancing the safety of our children.
- Offering Preschool instruction to increase future student enrollment.
- Providing versatile spaces for events and gatherings.

Your support is vital for the success of this campaign. Together, we can ensure St. Margaret Mary remains a thriving center of faith, community, and education. Thank you for your dedication and support.

Sincerely,

John and Debbie Miranda
Neil and Anne Ramsey
Jonathan and Susan Vlahos
Campaign Chairs



Our Goals:

- 1) \$11 Million Raised;
- 2) 100% participation - That includes you!

We invite you to reflect in faith and prayer as you consider completing a pledge card for the "Defining Moments" campaign.

See how little it takes to make a substantial gift over a 3-Year period!

Giving is over 3 years, and is over-and-above regular giving.

MONTHLY GIVING	3 YEAR GIVING TOTAL
\$5,000	\$180,000
\$4,000	\$144,000
\$3,000	\$108,000
\$2,000	\$72,000
\$1,000	\$36,000
\$900	\$32,400
\$800	\$28,800
\$700	\$25,200
\$600	\$21,600
\$500	\$18,000
\$400	\$14,400
\$300	\$10,800
\$200	\$7,200
\$100	\$3,600
\$75	\$2,700
\$50	\$1,800
\$25	\$900
\$10	\$360



VIEW LOOKING AT COURTYARD
ST. MARGARET MARY

EXTERIOR RENDERING 4
01/23/2024
JRA architects

*Want to turn your gift into a naming opportunity?
Contact the Parish Office for more!*



Prefer electronically?
Use the QR code to complete securely and electronically.



Confirmation with Archbishop

Committing to Defining Moments

As we complete our commitment cards, we will celebrate many moments of God's grace and the generosity of your support.

You will receive your physical card before Commitment Sunday. Below is an example of the commitment card:

Knowing this is our **Defining Moment**, I (we) plan to give over-and-above my (our) regular offertory support...

My (our) Total Pledge Amount is \$ _____

Please apply our pledge...

To the entire Defining Moments project.

To the Updates to the Church Project only


To the Updates to the School Project only

I (we) plan to pay the pledge
 ___ Weekly; ___ Bi-Weekly; ___ Monthly; ___ Annually; ___ Lump Sum (Check One)

I (we) plan to make our payments by ___ Check; ___ Online; ___ Credit Card;
 ___ Online Set Up a Recurring Payment at stmm.org/Online-Giving/

I (we) plan to fulfill our pledge by giving stocks, securities, or real estate

Signature(s): _____ Date: _____



**Complete your
Commitment Securely
& Electronically**

Name: _____

Address: _____

City: _____ State: _____ Zip: _____

Phone: _____

Email: _____

Your commitment is only an indication of your intention to give as you are able. We recognize circumstances can change for better or for worse.

St. Margaret Mary Catholic Community
 7813 Shelbyville Rd • Louisville KY 40222
 (502) 426-1588 • www.stmm.org



What Do We Ask You To Do?

- Commit to participating in St. Margaret Mary's Defining Moment Capital Campaign.
- Review the information and ask any questions to ensure you understand how your generosity supports the growth of our Parish.
- Contribute generously to help us reach our \$11 million goal.
- By Commitment Weekend, please submit your pledge card for ongoing and expanded giving.

DEFINING MOMENTS • STRENGTH WITH SPIRIT

